

# Lid

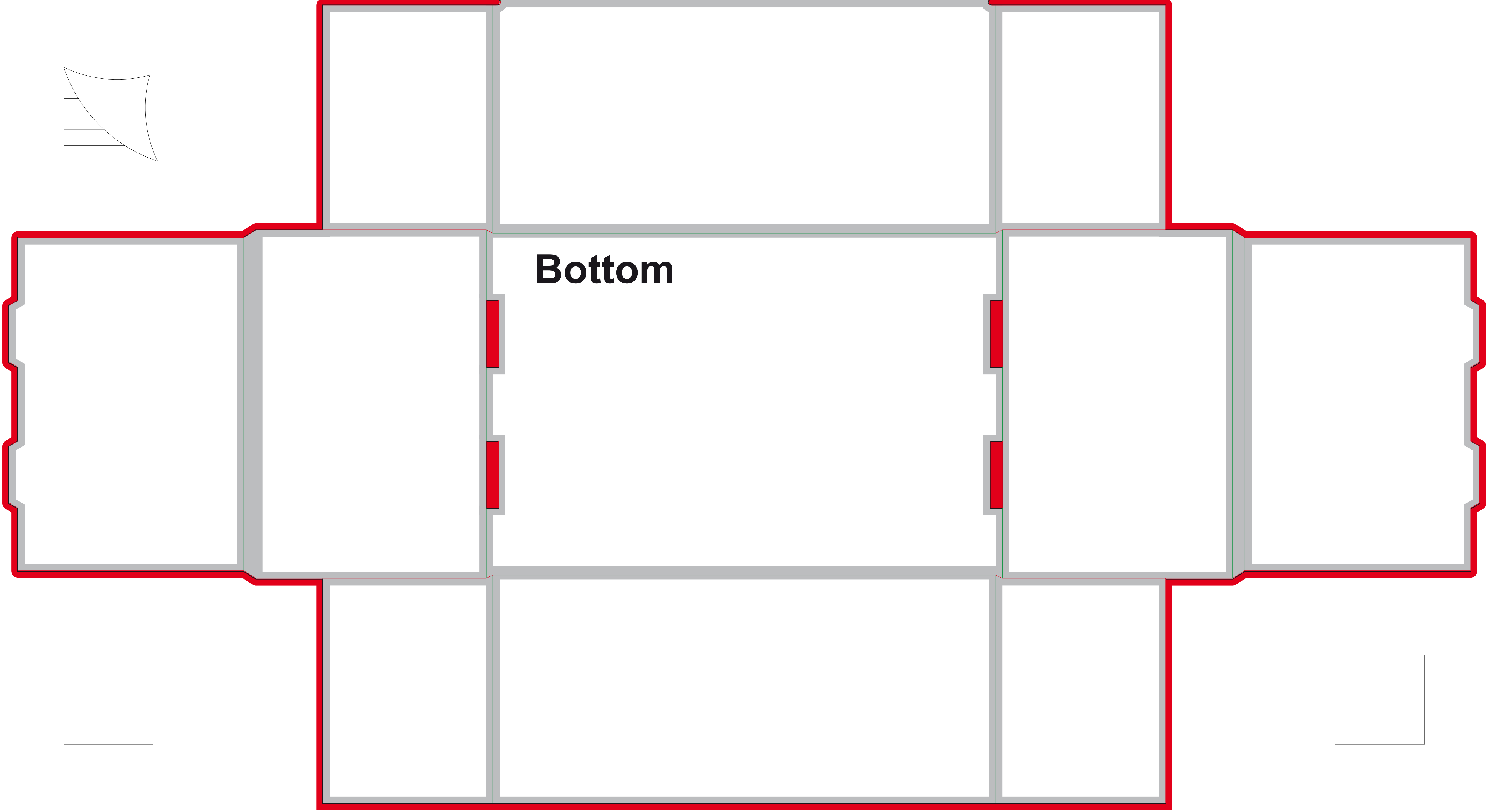
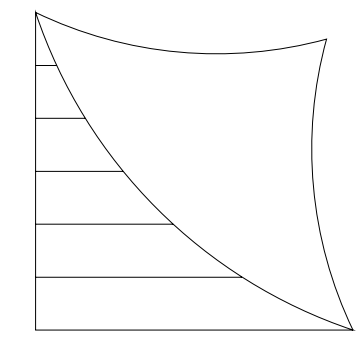
**Bleed**  
Background graphics and background colors must extend all the way to the edge, i.e. 3 mm beyond the final edge.

**Final edge**  
Final format after cut.

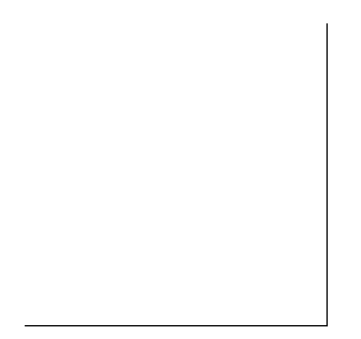
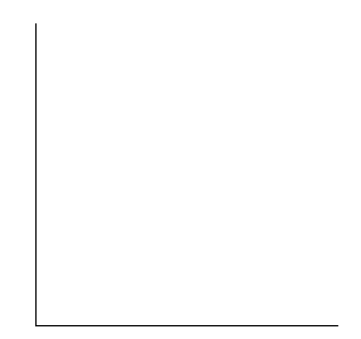
**Fold/bend**  
Here the product is folded/bend.

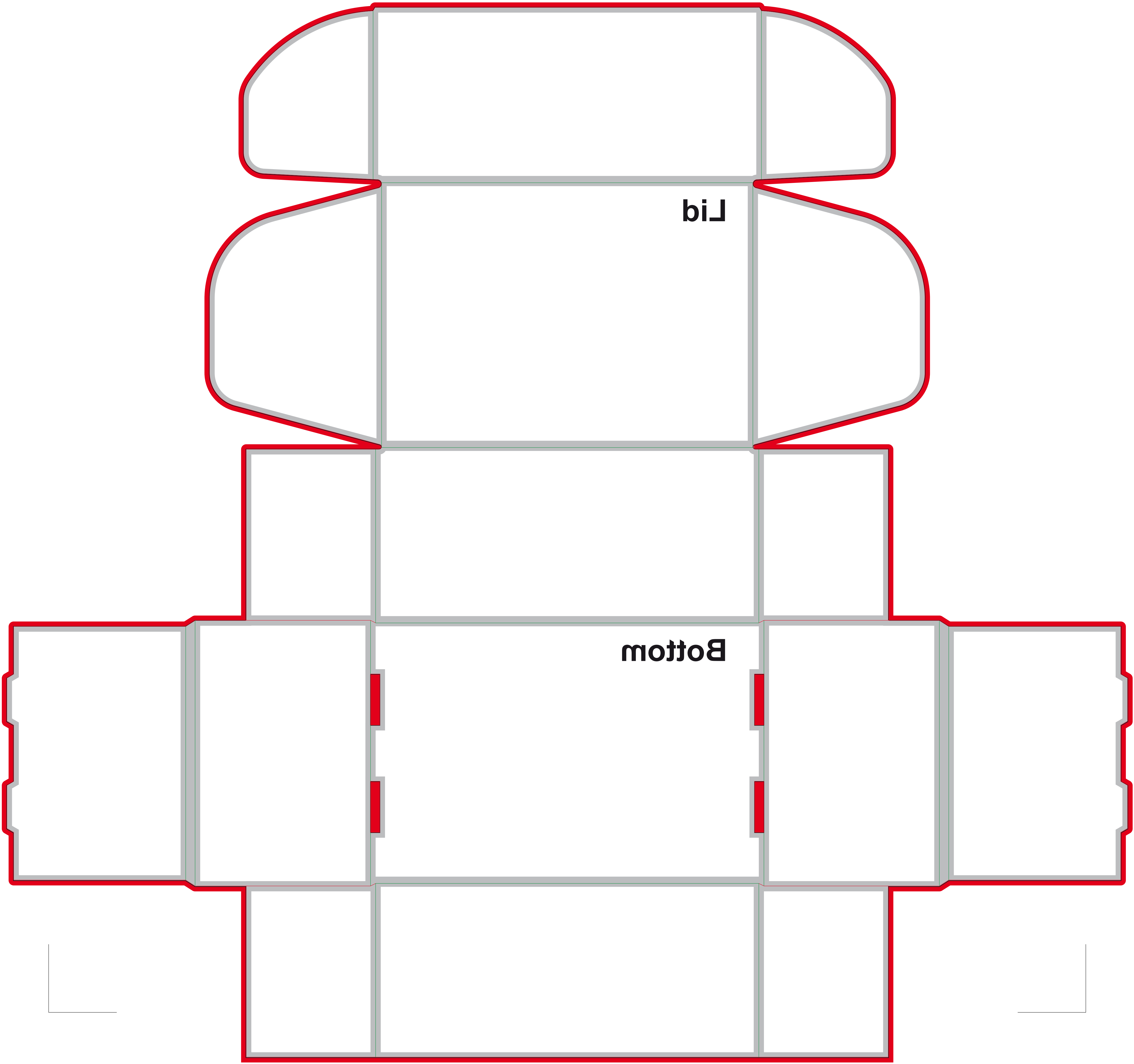
**Safetyzone**  
Text and images are placed in the safety zone 3 mm from the final edge.

Remember to remove/delete the "Template" layer before the final print file is generated.



# Bottom





Lid

Bottom